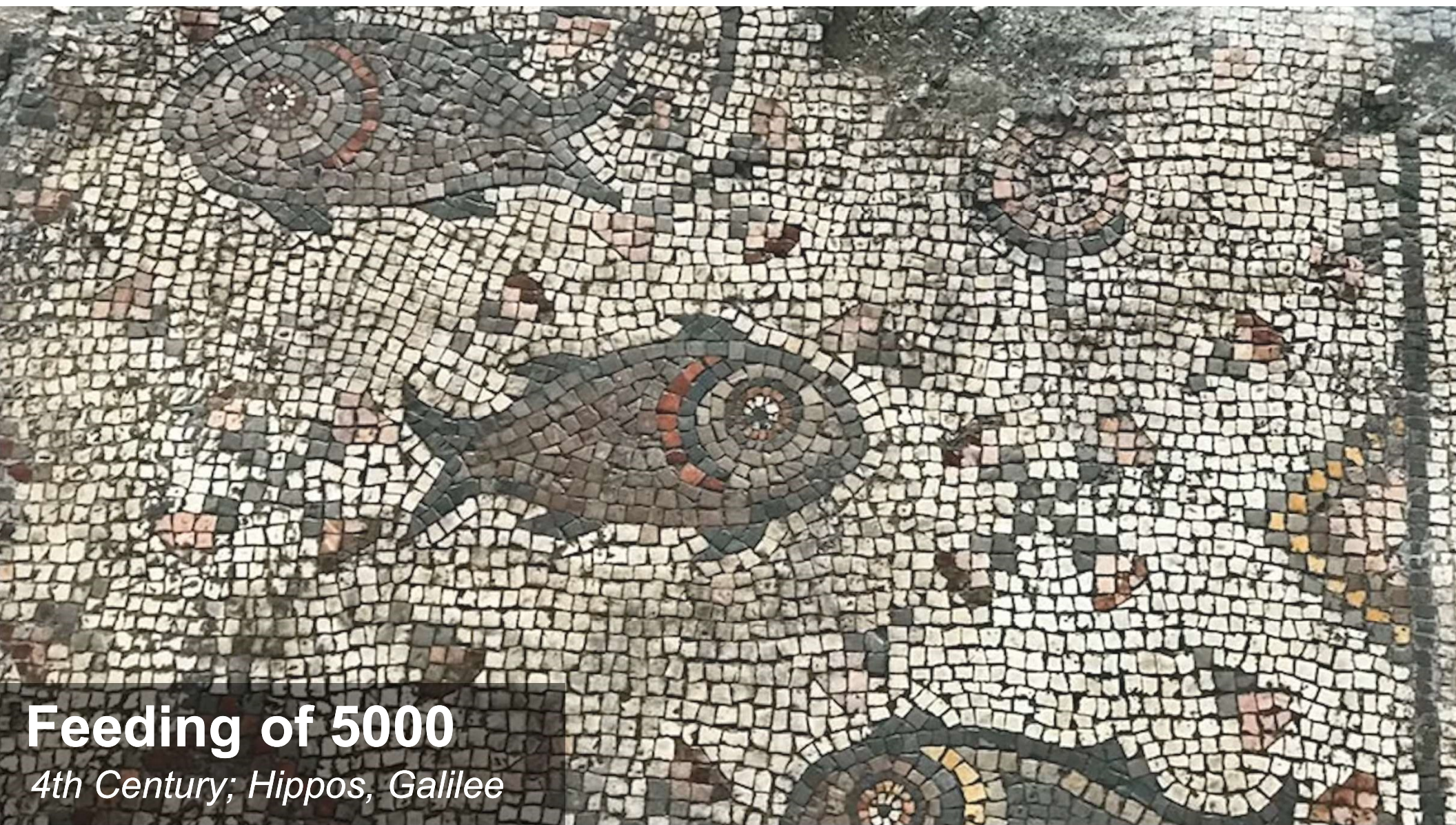


EVERGREEN
BAPTIST
CHURCH
OF
LOS
ANGELES

CHARACTER/WITNESS

LIVING IN THE NATURE OF GOD

2020
WINTER
SERMON
SERIES



Feeding of 5000

4th Century; Hippos, Galilee



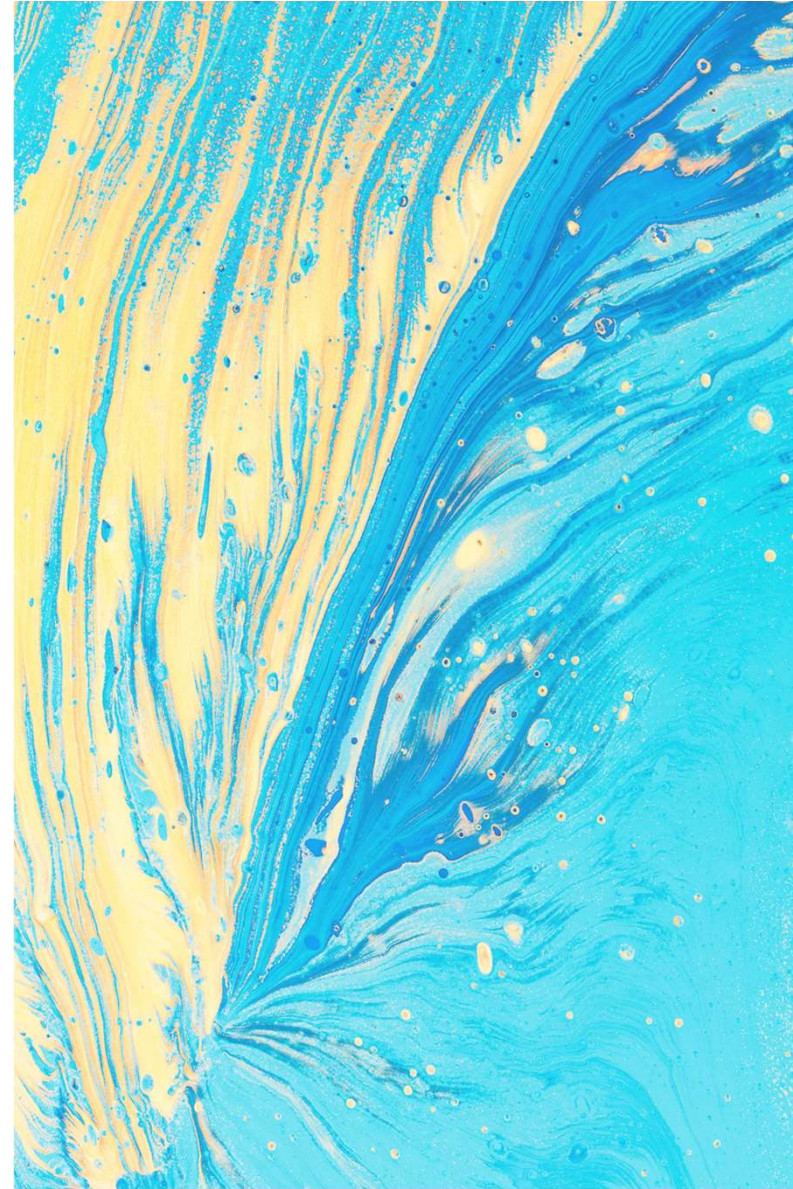
¹ Follow my example, as I follow the example of Christ.

1 Corinthians 11

⁸ Finally, brothers and sisters, whatever is true, whatever is noble, whatever is right, whatever is pure, whatever is lovely, whatever is admirable—if anything is excellent or praiseworthy—think about such things.

⁹ Whatever you have learned or received or heard from me, or seen in me—put it into practice. And the God of peace will be with you.

Philippians 4



Jehovah Jireh

The Lord Will Provide (Gen 22:13-14)



Jehovah Nissi

The Lord My Banner (Ex 17:14-15)



Jehovah Rapha

The Lord That Heals (Ex 15:26)



Jehovah Shalom

The Lord Is Peace (Judges 6:23-24)

The background of the slide is a dark, almost black, textured surface. It appears to be a close-up of a rough, cracked material, possibly asphalt or dry earth, with numerous small, light-colored specks and larger, irregular cracks visible throughout. The lighting is somewhat uneven, creating subtle gradients of dark grey and black.

Jehovah Shammah

The Lord Is Present (Ez 48:35)



¹ Follow God's example, therefore, as dearly loved children ² and walk in the way of love, just as Christ loved us and gave himself up for us as a fragrant offering and sacrifice to God.

Ephesians 5



character.