



The background is a dark grey field filled with a complex network of interlocking gears and nodes. The gears are of various sizes and are colored in shades of teal, orange, and yellow. Some gears are solid, while others are dashed outlines. The nodes are small circles, some solid and some dashed, connected by thin white lines. The overall effect is a sense of interconnectedness and mechanical complexity.

WINTER 2019

EVERGREEN BAPTIST CHURCH OF LOS ANGELES

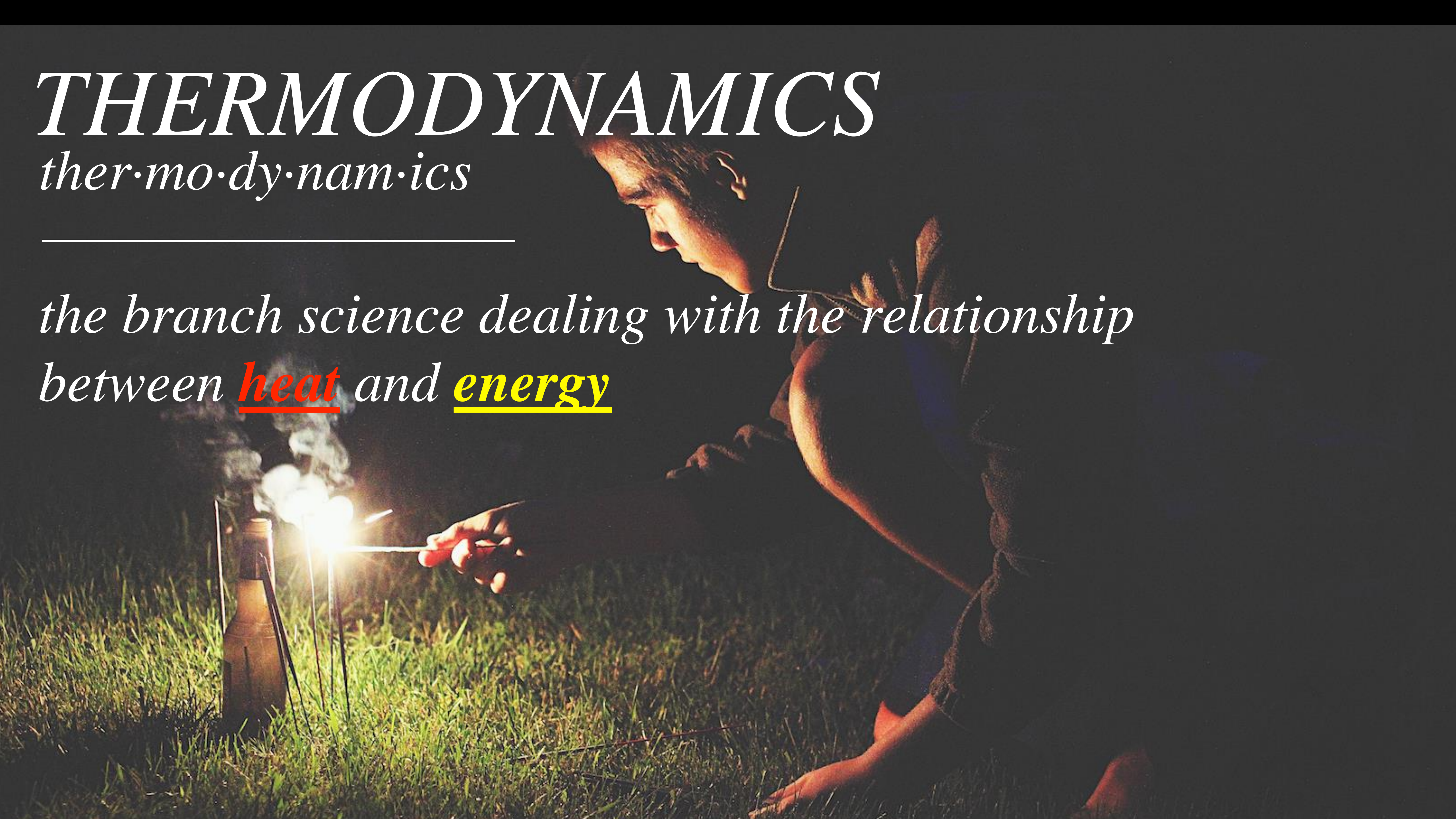
THE 4 LAWS OF THERMODYNAMICS

CREATING A COMMUNITY OF DIVINE WARMTH

THERMODYNAMICS

ther·mo·dy·nam·ics

*the branch science dealing with the relationship
between heat and energy*



42 They devoted themselves to the apostles' teaching and to fellowship, to the breaking of bread and to prayer.

Acts 2

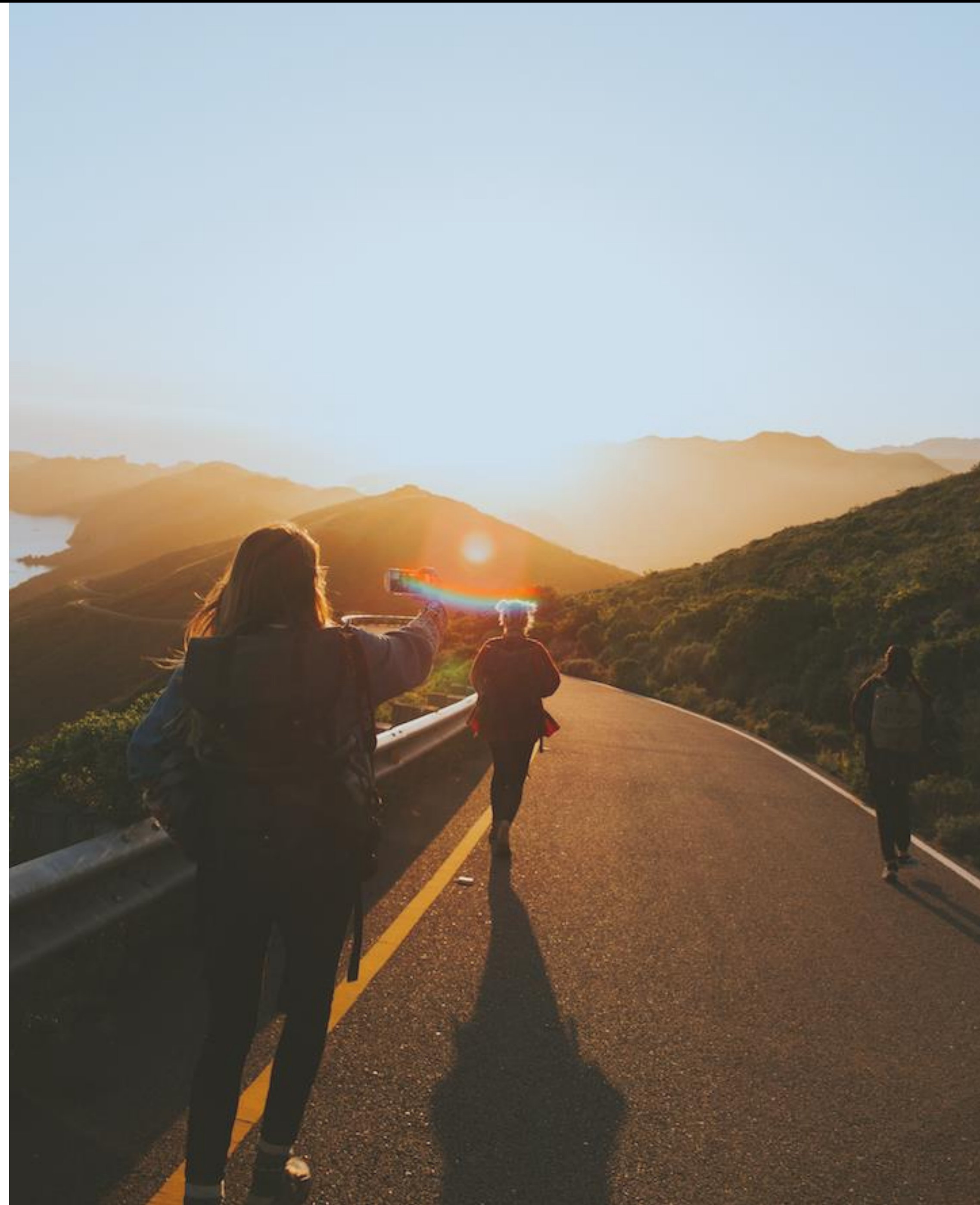




LEARN TOGETHER.

¹⁴ But as for you, continue in what you have learned and have become convinced of, because you know those from whom you learned it, ¹⁵ and how from infancy you have known the Holy Scriptures, which are able to make you wise for salvation through faith in Christ Jesus.

2 Timothy 3

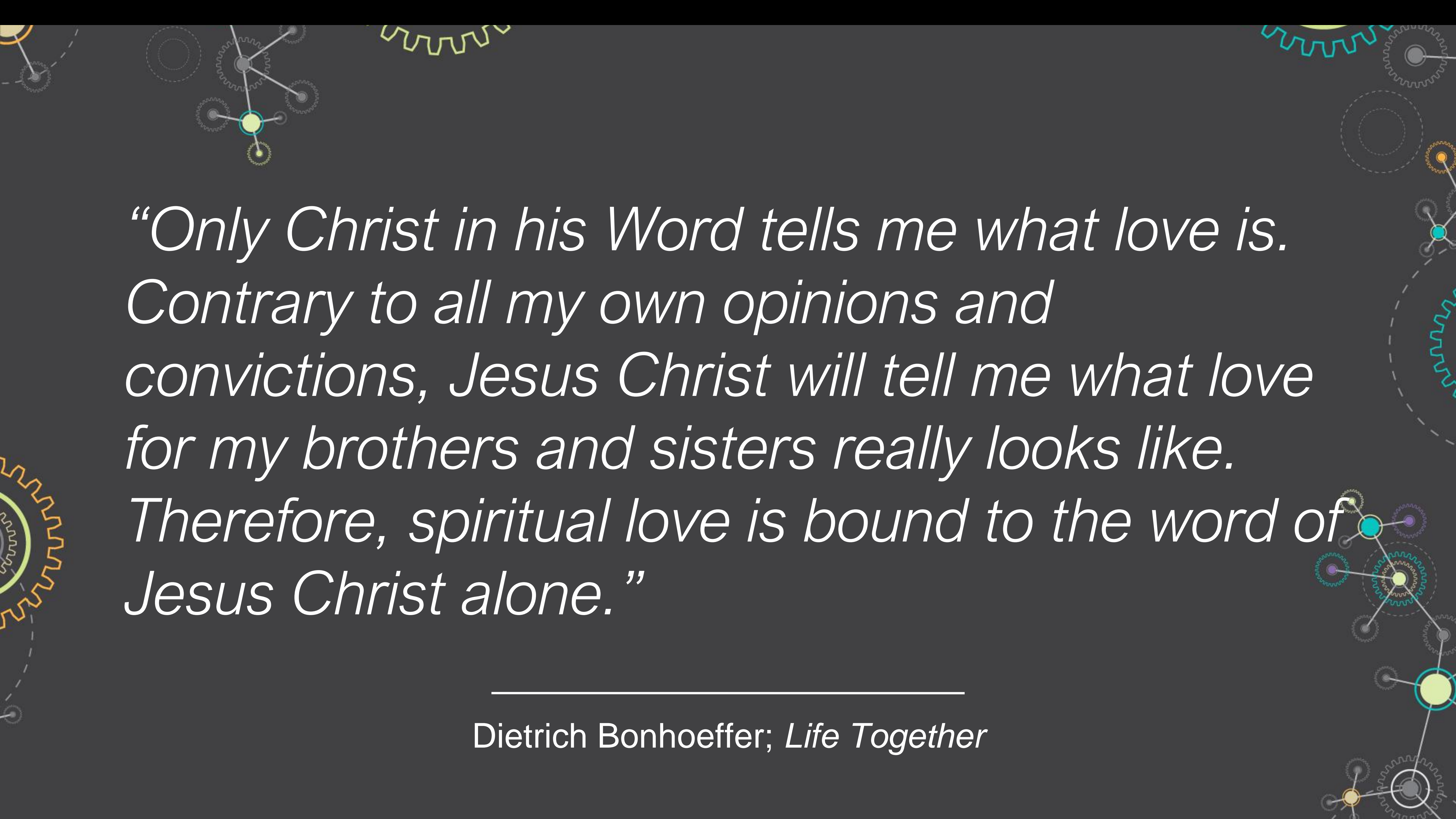




¹⁶ All Scripture is God-breathed and is useful for teaching, rebuking, correcting and training in righteousness, ¹⁷ so that the servant of God may be thoroughly equipped for every good work.



*²⁸ He is the one we proclaim,
admonishing and teaching everyone
with all wisdom, so that we may
present everyone fully mature in
Christ. ²⁹ To this end I strenuously
contend with all the energy Christ so
powerfully works in me.*

The background is a dark gray gradient. It is decorated with various mechanical and network-like elements. In the top left, there are several interlocking gears of different sizes and colors (yellow, green, blue). In the top right, there are more gears and a network diagram with nodes and connecting lines. In the bottom left, a large gear is partially visible. In the bottom right, there is a complex network diagram with multiple nodes and lines, some of which are highlighted in yellow and blue. The text is centered in the middle of the image, written in a white, italicized serif font.

“Only Christ in his Word tells me what love is. Contrary to all my own opinions and convictions, Jesus Christ will tell me what love for my brothers and sisters really looks like. Therefore, spiritual love is bound to the word of Jesus Christ alone.”

Dietrich Bonhoeffer; *Life Together*

Rendille People

Northern Kenya



pc: Esther Havens



*OUR WARMTH COMES
FROM HIM.*
